

# Join a Research Study!



## We are interested in how **Music Creativity** helps preserve **Brain Health** in older adults.

Get a chance to take free group music classes  
sponsored by Rice University, Musiqa, and  
Methodist Hospital's  
Center for Performing Arts Medicine



RICE



MUSIQA  
a new music collective

HOUSTON  
**Methodist**  
LEADING MEDICINE

### Who is Eligible?

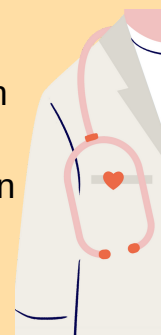
- Individuals diagnosed with Mild Cognitive Impairment *OR*
- Individuals 70 and older.

### Why?

- Contribute to scientific knowledge about the mind and body
- Monetary compensation for your time
- Music classes are at no cost to you

### What will you be doing?

- 2 in-person health visits
- For each visit, you will complete:
  - routine health assessments
  - questionnaires
  - fMRI brain scan
- Learn, compose, & create your own music
- Meet other people from the Houston community



## Interested?

**Contact the BMED Lab at:**  
**CHROMA@rice.edu**

**Call us at: 281-305-8589**

This research study has been reviewed and approved by Rice University Institutional Review Board. If you have concerns regarding this study or questions regarding your rights as a study participant, please contact Joanna Espinosa, Compliance Administrator -IRB, at Rice University. Email: [irb@rice.edu](mailto:irb@rice.edu) or Telephone: 713-348-3586.



PSYCHOLOGICAL SCIENCES DEPARTMENT  
PHYSICS & ASTRONOMY DEPARTMENT  
THE SHEPHERD SCHOOL OF MUSIC

